

NOTICE TO MARINERS

North Falls Offshore Wind Farm - Notice to Mariners. Issue Date 04/02/2026 (First issue).

Overview

Mariners are advised that North Falls Offshore Wind Farm (NFOWF) will undertake a metocean survey within the Wind Turbine Array Area, at the Primary and Secondary locations shown in Table 1 and Figure 2.

Survey Duration

Mobilisation will commence on or after 18 February 2026, with the metocean survey lasting between 12 and 18 months. The planned survey end date will be no later than 16 August 2027.

Survey Tasks

The metocean survey work is being undertaken by Partrac, who will use the vessel CT Vector to deploy the metocean equipment at the Primary and Secondary locations shown in Table 1 and Figure 2. It is expected that the deployment operation will last for one day.

The metocean equipment will consist of one seabed frame deployed at each location (i.e., a total of two seabed frames). Each seabed frame will be equipped with an acoustic Doppler current profiler (ADCP) and additional sensors (temperature sensor, water-level sensor, and turbidity sensor). Each seabed frame will be connected to a clump weight, with approximately 100 m leaded polypropylene ground line between the seabed frame and clump weight.

As a consequence of equipment being deployed, all mariners are advised to keep a safe clearance distance of no less than 500 m from the deployment vessel and metocean equipment deployment locations. No towed survey equipment will be deployed from the vessel.

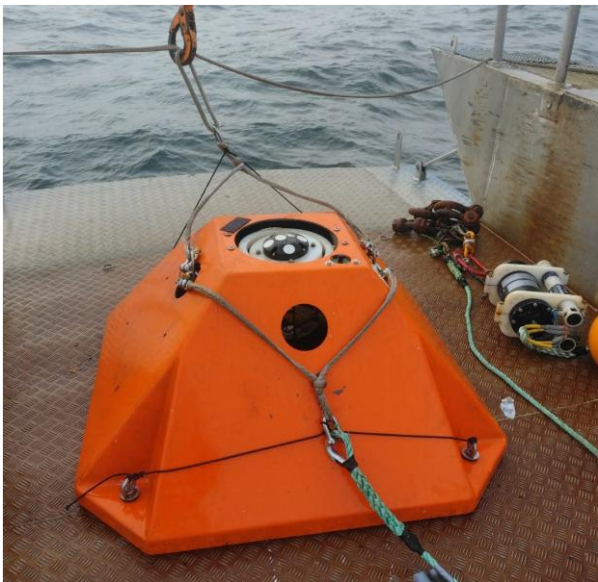


Figure 1: Example Seabed Frame

Table 1 – Deployment Locations

Location	Latitude (DD)	Longitude (DD)	Latitude (DDM)	Longitude (DDM)
Primary (North)	51.7584° N	1.8944° E	51° 45.502' N	01° 53.661' E
Secondary (South)	51.6944° N	1.8769° E	51° 41.664' N	01° 52.615' E

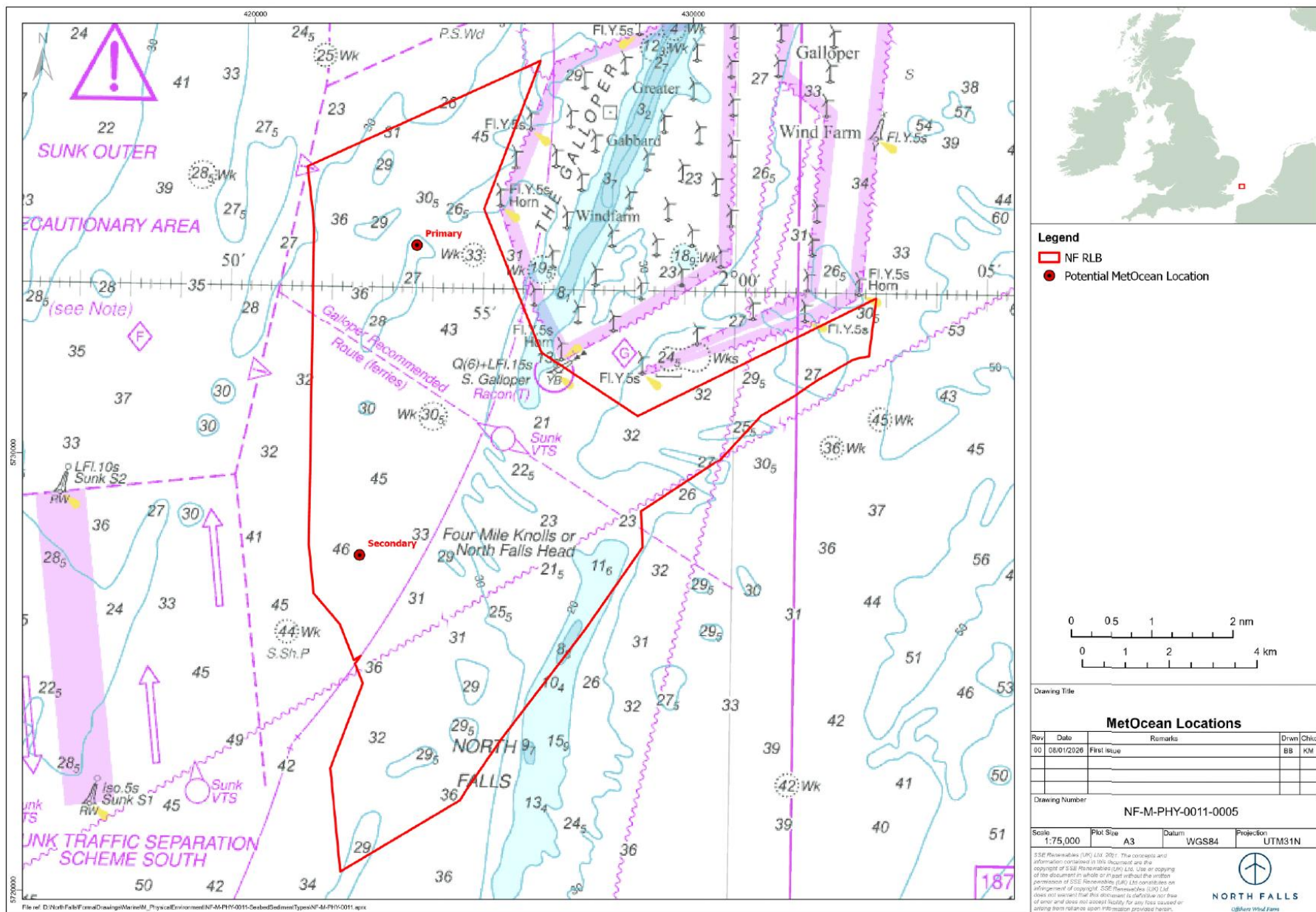


Figure 2: North Falls Wind Turbine Array Area and MetOcean Deployment Locations

Vessel – CT Vector



Vessel - Contact Details

CT Vector	
Call Sign:	2BBA2
MMSI:	235064573
IMO:	8738330
Vessel phone:	+44 (0) 7883 735888
Vessel email:	vector@carmet.co.uk
Office phone:	+44 (0) 151 327 8018
Office email:	office@carmet.co.uk

Further marine enquiries can be addressed to:

Partrac Team Contact Details	NFFO Services Operations Team
Project Manager – Kevin Ransom +44 (0) 1626 906 673 kevin.ransom@venterra-group.com Operations Manager – Joey Mitchell +44 (0) 1626 906 673 Joey.Mitchell@venterra-group.com	Switchboard: +44 (0) 1904 635 430 Email: nffoservices@nffo.org.uk

Onshore Fisheries Liaison Contact Details

Onshore fisheries liaison for this survey will be co-ordinated by Brown and May Marine. If there are commercial fishery queries, please contact Sophie Farenden: +44 (0)7391 402387 or email: sophie.farenden@brownmay.com or northfalls@brownmay.com .

For further survey information contact:

North Falls Offshore Wind Farm Survey Team: contact@northfallsoffshore.com