



WALMER TOWN COUNCIL

62 The Strand, Walmer, Deal, Kent CT14 7DP

Web site: www.walmercouncil.co.uk E-mail: clerk@walmercouncil.co.uk

Tel: 01304 362363

Dated this day 20th May 2026

To: Councillors: Cllr P Ludwig, Cllr L Ludwig, Cllr S Waite-Gleave, Cllr E Crockford, Cllr D Richardson, Cllr P Findley, Cllr R Blackwell.

Non-voting members: Mrs D Bogue, Miss A Late.

.....
You are hereby summoned to attend a meeting of the **Walmer in Bloom Committee** to be held on **Tuesday 26th May 2026** at No 62 The Strand, Walmer, CT14 7DP at 5.30pm to transact the business set out below.

Mr Roland Aldred
Town Clerk

.....
AGENDA

- 1. ELECTION OF A CHAIRMAN FOR THE COMMITTEE FOR 2026/2027**
- 2. ELECTION OF A VICE CHAIRMAN FOR THE COMMITTEE FOR 2026/2027**
- 3. APOLOGIES FOR ABSENCE**
- 4. DECLARATIONS OF INTEREST**

To receive any declarations of interest from Members in respect of business to be transacted on the agenda.

Where a Member has a new or registered Disclosable Pecuniary Interest (DPI) in a matter under consideration, they must disclose that they have an interest and, unless the Monitoring Officer has agreed in advance that the DPI is a 'Sensitive Interest', explain the nature of that interest at the meeting. The Member must withdraw from the meeting at the commencement of the consideration of any matter in which they have declared a DPI and must not participate in any discussion of, or vote taken on, the matter unless they have been granted a dispensation permitting them to do so. If during the consideration of any item a Member becomes aware that they have a DPI in the matter, they should declare the interest immediately and, subject to any dispensations, withdraw from the meeting

Where a Member is declaring an Other Significant Interest (OSI), they must also disclose the interest and explain the nature of the interest at the meeting. The Member must withdraw from the meeting at the commencement of the consideration of any matter in which they have declared an OSI and must not participate in any discussion of, or vote taken on, the matter unless they have been granted a dispensation to do so or the meeting is one at which members of the public are permitted to speak for the purpose of

making representations, answering questions or giving evidence relating to the matter. In the latter case, the Member may only participate on the same basis as a member of the public and cannot participate in any discussion of, or vote taken on, the matter and must withdraw from the meeting in accordance with the Council's procedure rules.

5. MINUTES OF THE PREVIOUS MEETING

To approve the minutes of the meeting held on 17th March 2026.

Attach 1

6. QUESTIONS AND/OR OBSERVATIONS FROM THE ELECTORATE OF WALMER

7. CHAIRMAN'S REPORT

- i. To Note: Verbal Update from Chairman.

8. ADMIN REPORT

- i. To Note: Update from admin regarding actions.

Attach 2

9. WALMER IN BLOOM CAMPAIGN

- i. To update on online voting portal.
- ii. Update on planters.
- iii. Update on baskets.

Attach 3

Attach 4

10. HAWKSHILL

- i. Update on boundary posts.
- ii. Bird Boxes.
- iii. New pathway signs.
- iv. New Information Board.
- v. Sculpture.

Attach 5

Attach 6

11. WALMER PEACE GARDENS

- i. To Note: Update from WPG Committee.
- ii. To discuss purchase of branch shredder.

Attach 7

Attach 8

12. LOCAL NATURE RESERVE

- i. To decide on whether to apply for Local Nature Reserve status for Hawkshill common.

Attach 9

13. GARDEN COMPETITION

- i. To discuss request from Hornbeam School to enter the garden competition .

14. ISSUES FOR INCLUSION ON NEXT AGENDA

15. DATE OF NEXT MEETING

23rd June 2026 at 5:30pm.



WALMER TOWN COUNCIL

62 The Strand, Walmer, Deal, Kent CT14 7DP

Web site: www.walmercouncil.co.uk E-mail: clerk@walmercouncil.co.uk

Tel: 01304 362363

Draft Minutes of the meeting of the Walmer in Bloom Committee held on 17th March 2026 at 62 The Strand, Walmer, at 5.30 pm.

Present:

Cllr E Crockford (Chairing)
Cllr P Ludwig
Cllr D Richardson
Cllr S Waite-Gleave
Miss A Late

Officers present: John Miles (Administration Officer) Roland Aldred (Town Clerk)

533. APOLOGIES FOR ABSENCE

Apologies received from Cllr L Ludwig and Mrs D Bogue.

534. DECLARATIONS OF INTEREST

None Submitted.

535. MINUTES OF LAST MEETING

RESOLVED – That the minutes be taken as an accurate record, with changes to 485.ii, 485.iii, 486.i, 486.ii, 491 and the inclusion of an entry between 484 and 485.

Proposed by: Cllr S Waite Gleave

Seconded by: Cllr D Richardson

For 4 Against 0 Abstain 0

536. QUESTIONS AND/OR OBSERVATIONS FROM THE ELECTORATE OF WALMER

None received.

537. COMMITTEE BUSINESS

- i. **NOTED:** That the inclusion of a meeting in April may happen if requested.
- ii. **NOTED:** Nominations for Chairman and Vice Chairman have been deferred until May 19th.
- iii. **NOTED:** As part of future proofing for the committee, the Clerk will on a voluntary basis meet with the volunteers at the Hawkshill volunteer sessions periodically to get updates of actions and requirements. This will be fed back to the WIB committee.

538. CHAIRMAN'S REPORT

- i. No update was made by the chairman

539. ADMIN REPORT

- i. **NOTED:** Committee received update from admin.
Actions: Admin to find prices for a woodchipper for Walmer Peace Gardens and write a proposal for the next meeting.

The Clerk had contacted Mr Shenton of Kent Wildlife Trust to arrange a meeting; members were available to meet on Wednesday 25th March.

540. WALMER IN BLOOM CAMPAIGN

- i. **RESOLVED:** To accept the quote for leafletting from Tower Design and Press for a cost of £700.

Proposed by: Cllr D Richardson

Seconded by: Cllr S Waite Gleave

For 4 Against 0 Abstain 0

Actions: Admin to inform Tower Design that their quote has been accepted.

- ii. Leaflets are to be sent out by end of May, once the design is drafted it is to be sent to the members for an email vote.

RESOLVED: Committee has delegated permission to Admin to forward the design once it has been produced for an email vote.

Proposed by: Cllr P Ludwig

Seconded by: Cllr E Crockford

Actions: Admin to forward leaflet when ready.

The office is to work on a leaflet design based on last year's WIB leaflet. Design is to be shown to all staff members for input before sent out to save time, once completed the design will be sent out to all committee members.

Nominations for the garden competition will be by email this year, to make it easier on the public and staff, the leaflet will reflect this with one side for nominations and the other for voting. Hard copies will also be made available at the office.

The competition will no longer include entries for back gardens; any nomination will need to be visible from public thoroughfares. Entry forms will also need to say what category the nomination is for.

Permission to use road names on the voting page will be requested by the office via email or letter to the nominee.

- iii. **RESOLVED:** To designate funds for the application to KCC to use lampposts along The Strand for a maximum of £60.

Proposed by: Cllr S Waite Gleave

Seconded by: Cllr P Ludwig

For 4 Against 0 Abstain 0

Actions: Admin to apply for permissions when opened.

- iv. **NOTED:** That members of the committee will be available on the 7th, 8th and 9th of April to judge the poster competition entries.

- v. **NOTED:** That a specific press release will not be necessary this year, any publicity for the poster competition will remain on the council website.

- vi. **RESOLVED:** Five categories have been chosen for the competition, Wonderful for Wildlife, Standard Garden, Compact, Containers/Hanging Baskets and Non-Residential.

Proposed by: Cllr P Ludwig

Seconded by: Cllr D Richardson

For 4 Against 0 Abstain 0

- vii. **NOTED:** The Committee were updated regarding the construction of the nomination and voting portals, Admin to update committee of any changes as they come.

541. HAWKSHILL

- i. The committee were given an update on the purchase of wooden boundary posts for Hawkshill Freedown. A third more decorative post for use at on the pathway may be purchased later.

RESOLVED – Clerk to purchase two standard wooden posts for installation at Hawkshill, Red Dog are to install the posts. Admin to source two engraved metal discs for the posts.

Proposed by: Cllr P Ludwig

Seconded by: Cllr D Richardson

For 4 Against 0 Abstain 0

Actions: Clerk to purchase wooden posts.

Admin to source metal discs.

Admin to inform Red Dog Services regarding installation of posts.

542. WALMER PEACE GARDENS

- i. **NOTED:** To Note: Update from WPG Committee.
Request was made to ensure that the Easter Egg Hunt poster is put up on WTC social media and website.

RESOLVED – Members agreed a £72 spend on supplies for the Easter Egg Hunt was authorised and paid to the Peace Garden Group.

Proposed by: Cllr P Ludwig

Seconded by: Cllr D Richardson

For 4 Against 0 Abstain 0

WPG Committee to consult with the clerk regarding paperwork for the Pilates and Sound Bath including qualifications, risk assessments and Public Liability insurance. regarding the required paperwork.

RESOLVED – Authorisation was given for a spend of up to £200 for the Pilates and Sound Bath events at WPG.

Proposed by: Cllr P Ludwig

Seconded by: Cllr D Richardson

For 4 Against 0 Abstain 0

Actions: Clerk to investigate the possibility of a noticeboard at the corner of Church Street and York and Albany informing the public about the WPG

- ii. **NOTED:** The amended Invoice for the tree works at WPG was presented to the committee.

543. ITEMS FOR INCLUSION ON NEXT AGENDA

544. DATE OF NEXT MEETING

19th May 2026 at 17:30.

The meeting closed at 19:00

Signed _____

Dated _____



Item: Walmer In Bloom Update Report

Date: 18th May 2026

Meeting: Walmer In Bloom

From: Admin Clerk

1. The clerk has attempted to contact DDC about the shingle from the access road, but there has been no update as of yet.
2. Simon Jackson from Ripplevale school has been in contact asking which planters are to be replaced. He was informed that it was the two outside the paddling pool.
3. I now have contact numbers for the planter volunteers and most of the registration forms for the Hawkshill volunteers.
4. I am writing a few new additions for the noticeboard, hopefully in time for the summer.
5. The paint for the planters has been bought and handed over to the Chairman.
6. The printer and distributor were both informed their quotes were successful.
7. The current version of the leaflet has been sent out to the committee for evaluation.
8. Regarding a noticeboard for the entrance to York and Albany, currently there is nowhere to put a new noticeboard up as the green space on either side are not suitable. In addition, the Peace Gardens do not meet the criteria to apply for a brown road sign. Parking and toilets being chief among these.



Item: Nominations and Voting Update

Date: 19th May 2026

Meeting: Walmer In Bloom

From: Admin Clerk

1. The email address has been changed from Deputy Clerk to WIBcompetition, this is the email address that will be used on all social media and leaflets/posters.
2. A platform for the voting has been found, using PollUnit will allow up to 2000 participants, 500 files/30 gig storage. This will allow for around 150 entries, last year's competition had a total of 107 entrants.

This website allows for the addition of each of the categories, as well as a limit to the number of photos uploaded to each. It also allows for those voting to see larger pictures by clicking on the photos and scrolling through them.

Costs: 1 Month Business- 29 euros per month
12 Months- 12 euros per month.

Capacity: 2,000 participants per PollUnit
500 files per PollUnit
30 GB Storage

The business pricing includes the ability to do the following:

- Voting start and deadline
- Voting for one entry only
- Allow only one participation+IP check
- Hiding votes
- Remove requirement for Pollunit account
- Custom website address
- Unlimited Pollunits

Extras:

The cost of the account also assists with the planting of new trees, with 7 for the 1 month account and up to 38 trees for the 12 month account.

Committee to decide on accepting the use of this platform



Amy Cottage
Reach Road
St Margarets-at-Cliffe
Kent
CT156AP

28th April 2026

Quotation

Dear Mr John Miles ,

Thank you for asking Red Dog Garden Services to provide this quotation.
To dismantle and dispose of the two planter surrounds on The strand will be £95.00
I can do this at your earliest convenience

Any questions please don't hesitate to ask.

Kindest regards

Chris Dawson

Mobile: 07879 878421

www.reddoggardenservices.co.uk
info@reddoggardenservices.co.uk

Environment Agency Registered Waste Carrier: CBDL274023



Item: Boundary Posts
Date: 14th May 2026
Meeting: Walmer In Bloom
From: Administration Officer

Two boundary posts have been put in by Red Dog Garden Services, to ensure that these posts are left alone, quotes for metal discs to be fixed onto the posts have been requested. The original request was based on the size and shape of the wood posts that would be going up at Hawkshill, these were 80mm x 80mm circular metal discs that could be screwed onto the posts. Each company was advised about what they were for and that we could supply the image of the town council's badge for it.

I have received replies from three companies that can assist us with this, one in Lincolnshire, one in Dover and one in Manston.

Quote No	Type	Qty	Type	Artwork Cost	Cost	Delivery
1	Black Line	3	Zinc	£45.00	£96.84	£30.00
	Black Line	3	Stainless Steel	£45.00	£45.84	£30.00
2	Colour	3	Zinc	£45.00	£135.51	£30.00
3	Black Line	3	Brass	N/A	£117.00	N/A
4	Black Line	3	Stainless Steel	N/A	£47.01	N/A
	Black Line	3	Aluminium	N/A	£35.91	N/A

Committee to decide on purchase of discs.



Item: **New Pathway Signs**
 Date: **18th May 2026**
 Meeting: **Walmer In Bloom**
 From: **Admin Clerk**

Several temporary signs have been put up at Hawkshill to indicate the new pathway that is under construction, I have looked into the creation of permanent signs to be put in their place in the near future as shown below. Based on the original request I have put together a few simple signs to be looked over and changed if wanted.

All signs will be made of 1.5mm thick aluminium, with red text on a white background and the council badge on the top. All signs will be fixed with a pole attachment.

The smaller ones for the pathway signs are 300mm x 200mm rectangles, while the larger ones for the traffic crossing opposite Meadowside will be double that at 600mm x 400mm. The text can be altered and changed to say what the committee would prefer.

The costs for the signs are:
 Small- £55.40 each (Inc delivery)
 Large- £144.40 each (Inc delivery)

Any installation would need to come from a quote by Red Dog Garden Services.

Example:



Committee to decide on purchase of new signs.



WALMER PEACE GARDENS COMMITTEE

REPORT

16 May 2026

WPG committee meeting held on 27 April 2026.

Our mower has been repaired and serviced by Coastal Mowers. Many thanks to WTC clerk. The lawn area and paths are regularly cut. General maintenance continues.

Maintenance on our three mature trees has been carried out by Leaf Tree Services (23 March 2026).

Our Easter Egg Hunt on 5 April 2026 was a great success, generating very positive feedback from those who attended, and many requests to repeat it next year. In the sunshine, the children eagerly collected the coloured eggs before receiving their chocolate prize. Great community spirit!

Confirmation of event dates. The Sound Bath will be held on Saturday 20 June (not 21 June). Pilates is scheduled for Saturday 4 July. Paperwork to be submitted to WTC.

We discussed a need for a marquee (useful for events), and an appropriate ladder to reach the hedging. To discuss with the clerk/WIB committee. We decided against purchasing a shredder.

Work is underway to design/paint a welcoming sign at the entrance.



WALMER
PEACE GARDENS



Item: **Wood Chippers**
 Date: **13 April 2026**
 Meeting: **Walmer In Bloom**
 From: **Admin Clerk**

The Walmer Peace Gardens committee has requested the purchase of a small woodchipper/shredder for use at the gardens. This will be for the removal of larger branches when trees and bushes are trimmed down, the remains will then be either disposed of or used on site.

Due to the location and size of the branches that will be shredded, any equipment purchased will require a 60mm chipping capacity as well as a petrol-powered engine. A few pairs of safety glasses/goggles will also be needed for those who are to use the chipper.

Three different chippers have been sourced from different companies, all under £500 and all can be purchased and collected or delivered depending on the one that is chosen.

B&Q



Great low price

Crytec CRC200X 60mm Capacity Compact Petrol Wood Chipper

Sold & shipped by [Crytec Power \(Crytec Limited\)](#)
 Available online only and not stocked in B&Q stores

★★★★★

£494.90

Pay in 3 interest-free payments of £164.97 with [PayPal](#) [Learn more](#)

✓ Home Delivery
[Change postcode](#)
 Free delivery within 3 to 5 working days
 Shipped by a verified seller

✗ Click + Collect
 We do not offer Click + Collect for this item

- 1 +

Add to basket



✗ Find in store
 Available online only and not stocked in B&Q stores

[Garden Shredders and Wood Chippers at B&Q](#)

Machine Mart

HYUNDAI HYCH6560 196CC 60MM PETROL 4-STROKE GARDEN WOOD CHIPPER SHREDDER [Back to product list](#)



Product manual

Product Code 030516560
Manufacturer sku HYCH6560



FREE UK DELIVERY ON THIS PRODUCT

[Restrictions Apply](#)

£439.99 inc VAT

For store availability please call
0115 956 5555 (option 1).

★★★★★ 2 Reviews

Email when in stock

Add to Wish List

This item can be ordered online in-store or by phone, please allow 7 working days for home delivery.



Finance available

From £9.57 per month

SEE FINANCE OPTIONS



The HYCH6560 is a compact and lightweight wood chipper from Hyundai, powered by a 196cc / 6.5hp 4-stroke IC200 Hyundai engine. The HYCH6560 is capable of chipping / shredding wood, twigs, trimmings and. [Read more](#)

- 196cc / 6.5HP Hyundai heavy duty 4-stroke engine
- 2 puncture proof tyres & front softgrip handlebar for easy maneuverability
- 60mm maximum chipping capacity.
- 2 blade drum mechanism is designed to draw in and chip branches up to 60mm diameter.
- Emergency stop button for maximum safety and personal protection equipment included (gloves, goggles and ear defenders).
- Direct drive, no drive belts to wear and replace.
- Covered by Hyundai UK 3 year warranty.

[View technical specification](#)

Hyundai HYCH6560 196cc 60mm Petrol 4-Stroke Garden Wood Chipper Shredder - Machine Mart

Forest Master



Sale!

FM6DD Compact 6HP Petrol Wood Chipper – Direct Drive, Rotatable Hopper, Chips Up to 50mm

From £479.95 inc VAT

[NEW] Enhanced Anti-Blocking System (Rotatable Hopper and Exit Chute) – The new rotatable hopper and exit chute work together to easily handle wet or dense materials. Adjust their position to maintain smooth material flow, reducing blockages and keeping you chipping without interruptions.

Chips Branches Up to 50mm. Capable of shredding branches up to 50mm (2 inches) in diameter, this powerful chipper turns thick limbs and fresh cuttings into clean, uniform wood chips with ease.

Direct Drive Power, No Belt Hassle. With a direct drive system, there are no belts or chains to adjust or replace. Enjoy consistent, reliable power from the 6HP LCT Max Series engine, effortlessly chipping branches up to 50mm.

Double the Blade Life. Equipped with twin reversible blades for extended cutting capacity. When one side wears out flip them over for fresh, sharp performance, maximizing your productivity with minimal maintenance.

Compact Yet Mighty. Weighing just 38kg, this chipper is easy to move, store, and operate. The folding hopper and hinged chute design further minimize its footprint, making it perfect for home gardeners and professionals seeking high performance in a small package.

Extended 2-Year Warranty. Enjoy added peace of mind with our extended 2-year warranty, ensuring your investment is protected with expert service and support.

UK Designed & Supported. Proudly engineered in the UK with full technical expert support available. Count on dedicated UK-based assistance for exceptional customer care and peace of mind.

Patent (GB210107.8) / International (PCT/IB2021/054494)

★★★★★ (325 customer reviews)

SHIPPING OPTIONS

boxed

BOXED

FREE HOME DELIVERY

FM6DD Compact 6HP Petrol Wood Chipper – Direct Drive, Rotatable Hopper, Chips Up To 50mm | Forest Master

B&Q



 Sold 239 times in the last 48 hours.

[NEY223 Transparent Lens Overspecs](#)

NEY223 Transparent Lens Overspecs

Sold & shipped by B&Q

★★★★★ (21)

£1.70

 Home delivery

Delivery confirmed in the checkout

 In store

Click + Collect online or find in store

✓ Home Delivery

[Change postcode](#)

Delivery from next working day * (excludes bank holidays) Order by 7pm (Monday - Friday)
Order by 4pm (Saturday - Sunday) Delivery date confirmed in checkout ⓘ



 Highly rated! 88% of customers rated this product 4+ stars or higher.

[NEY223 Transparent Lens Overspecs](#)

NEY225 Clear lens Safety goggles

Sold & shipped by B&Q

★★★★★ (28)

£2.30

 Home delivery

Delivery confirmed in the checkout

 In store

Click + Collect online or find in store

✓ Home Delivery

[Change postcode](#)

Delivery from next working day * (excludes bank holidays) Order by 7pm (Monday - Friday)
Order by 4pm (Saturday - Sunday) Delivery date confirmed in checkout ⓘ



Item: Proposal to convert Hawkshill to a Local Nature Reserve.

Date: 12/05/26.

Meeting: May Walmer in Bloom.

From: Roland Aldred.

The Climate Emergency Working Group resolved to bring forward a recommendation to convert Hawkshill Freedown from its current status as a Site of Nature Conservation Interest (SNCI see below*) to a Local Nature Reserve (LNR). The reasoning behind this was to strengthen the protection status of Hawkshill Freedown in both planning and to allow the council to set legally enforceable bylaws. Further it was felt that this aligns fully with our commitments both to nature recovery and to natural carbon capture. Natural solutions to climate change in Kent are supported by the KCC report voted through by Kent County Council in March 2021.

*SNCI's are now referred to a Local Wildlife Sites or LWS. There is no need to remove the LWS status in order to add a LNR status many sites across the country operate with both.

As the committee responsible for the management of Hawkshill, Walmer in Bloom need to make the decision as to whether to attempt to move forward with the proposal.

What are the benefits designating sites LNR's?

There are two main benefits to changing the status to a LNR. Within the planning process a LNR receives stronger protection against development with adversely effects the reserve. The current status of LWS is a material consideration when adjudging a planning application. This means that the status must be considered and does form a material ground for turning down the application. All material considerations are given weight, and the Planning Authority must balance the weight of the material considerations for and against when deciding an application. A LNR would be given greater weighting in making a planning decision, additional protection is given under SP13 h of the local plan which relates directly to sites including LNR's:

"For locally identified biodiversity and geological assets, including Regionally Important Geological Sites, Local Wildlife Sites and Local Nature Reserves, as well as priority and locally important habitats and priority species, including chalk grasslands, development likely to have an adverse effect will be permitted only where the damage can be avoided or adequately mitigated or when its need outweighs the biodiversity interest of the site and when the coherence of the local ecological network is maintained. Compensation will be sought for loss or damage to locally identified biodiversity assets."

Disposal of a Local Nature Reserve requires councils to follow a formal consultative process. The first step in the process is to de-declare the land this requires consultation with Natural England.

The LNR status also allows for bylaws to be created that can legally be enforced. Rules can be set without the need of bylaws but these will continue as is at present to be not legally enforceable (outside of rules set under other statutes). To add bylaws a strict process must be followed, which takes a number of months to complete, advertising in local papers for a month must be undertaken.

Natural protections of the site.

Building on chalkland is generally considered more challenging than on many other ground types due to specific geological risks that require specialized, and often more expensive, engineering solutions. While chalk can provide a strong foundation when solid, its soluble nature and unpredictable subterranean structure pose significant risks, including subsidence and collapse. This would increase the cost of any development. As chalk grassland there would likely be a requirement for biodiversity net gain targets of 10% to be met. Due to the nature of any development it is unlikely that this would be able to be achieved on site while developing the site and therefore would require significant investment in off-site Biodiversity Credits.

What other changes would there be?

There would be no additional administrative requirements in terms of cutting trees in the situation where either members require that trees are cut or in an emergency.

Public access to as much of the land as possible is encouraged on LNR's, you are still able to set aside areas which are sensitive to the public. Currently this is how the plateau is operated with full public access, the area of woodland is not so open. This is not a legal right to access all areas and must be balanced between access and wildlife protection

Can this be undesignated at a future date?

Yes, the principle authority can after consulting with Natural England revoke the status. This should only occur if it is deemed necessary. Reasons for revoking designation include:

- The land is required for an essential development scheme, such as a road-widening project.
- The site has been given a higher level of protection, such as being declared a National Nature Reserve (NNR), in which case the LNR status must be de-declared.
- A breach of the original nature reserve agreement has occurred, jeopardising proper management.

This is an increase on the LWS status where you only need apply to Dover District Council. The only general reason removal of designation on a LNR will be granted is in the situation where the sites nature conservation interest has deteriorated to the point where it no longer meets the established criteria.

What are the requirements for an LNR?

There are six requirements in order to designate an area a Local Nature Reserve

1. Local Importance: The area must be important for wildlife, geology, education, or public enjoyment at a local level.

2. **Local Authority Control:** The council must own the land, lease it, or have a formal agreement with the landowner.
3. **Public Access:** At least part of the LNR should be accessible to the public for learning and enjoyment.
4. **Consultation:** You must consult with Natural England before declaring the LNR.
5. **Management Plan:** A detailed plan covering biodiversity, education, access, funding, and objectives is required.
6. **Formal Declaration:** The site is formally declared by the local authority (or local council with delegated powers) and announced locally.

Hawkshill it is believed would fit the requirements 1-5 once we have consulted with Kent Wildlife trust. This is subject to Natural England agreement and there may be items in the Management plan that they require changes to. Item 6 would only be after all other requirements are satisfied that they are met Dover District Council would then be asked to make a declaration on our behalf. Alternatively, DDC may grant WTC the power to declare the Freedown a LNR. Previously in Dover, DDC have granted the power to declare the site to Dover Town Council.

The management plan agreed last year may not need further updating for this process, The author of the management plan is one of KWT LWS surveyors and therefore should be in line with the requirements.

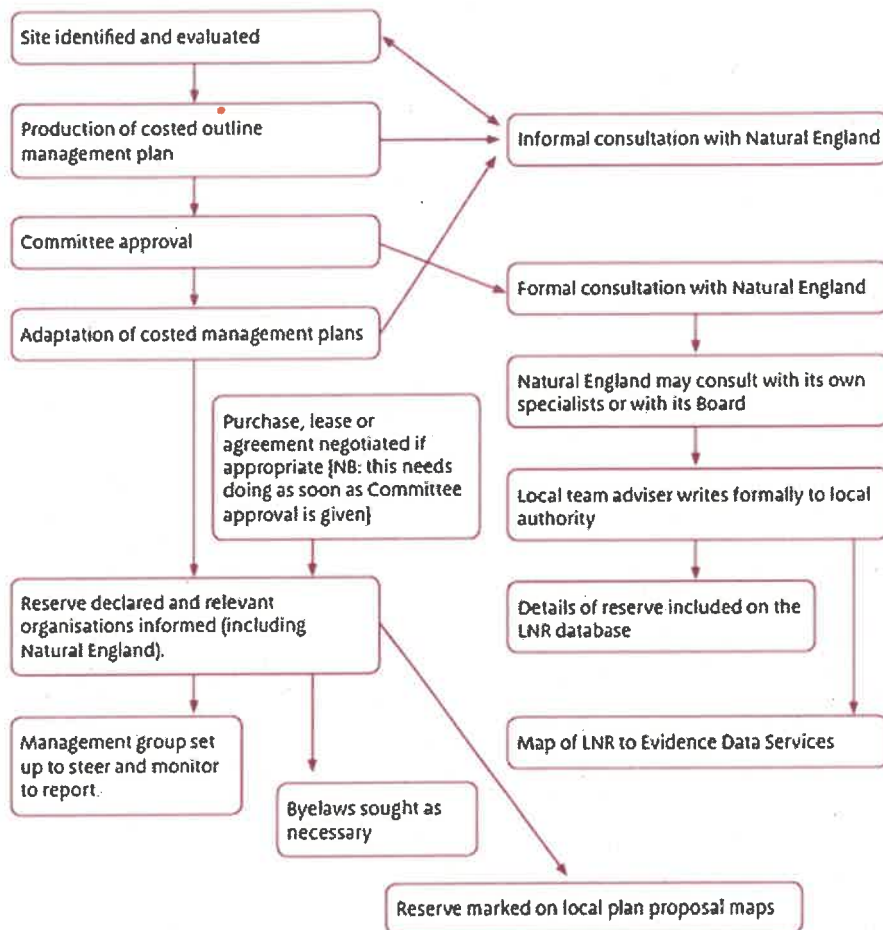
What costs are involved?

Kent Wildlife Trust would charge for the consultation at approximately £330, for two days' work. We have reached out to Dover District Council for any costs that would be applicable in making this application but have not yet received a response. A notice would be required to put in the local newspaper once the process is completed adverts start at £150 for the KM Mercury.

There may be additional costs associated with work required to make adjustments to the site to meet the required standards for a LNR following the Kent Wildlife Trust consultation.

Process for declaring an LNR

Main steps in setting up an LNR



Walmer Town Council already have a management plan in place put together by surveyor from Kent Wildlife Trust and therefore have partially dealt with steps up to committee approval (subject to Natural England approval of the plan). Additional documents required would be proof of ownership (office has deeds), a statement on why the land was chosen, the aims and objectives, what biodiversity and environmental education will be provided, community participation and visitor management and a site boundary map. This would mean subject to any changes to the plan being required WTC would be at the point of seeking formal consultation with Natural England and looking to declare the Freedown a LNR.

Meeting with Kent Wildlife Trust

Members met virtually with Kent Wildlife Trust to ask questions regarding the designation of LNR and the changes this would mean for managing Hawkshill Common. The questions members asked and the responses are listed below.

Q1. Why should we do this when we already are a local wildlife reserve, why should it make a difference?

A1. LWS is fine but non statutory, only in effect material consideration in making planning decision, we get notified if applications come in effecting the site. No statutory or legal protection but LNR is a designation under the national parks and access act 1949 and has legal protections against development pressures for example.

Q2. Given we own the land is there an issue with our statutory protection, we won't build on the land and it is not suitable for building. The only place you could build is the plateau because the edges are steep incline so the woodland would be safe.

A2. KWT are happy if stays as an LWS, if it's a place that will never be under threat then a LWS designation is fine for it.

Q3. Would the change require that a more focused approach on nature even if this limited the public in potential uses (eg dog walking)?

A3. The implications are for the council to decide how they want to present it to the stakeholders.

Q4. Has in your experience, conflict arisen on LNR's between those who want to see it as a nature reserve and then they see dogs off leads for example?

A4. Visitor management is one thing we would need to flag, dogs off leads are a problem for most areas. Always a few people who think they have a right to let their dogs off leads even if there are signs saying no. LNR allows bylaws to control dogs in certain areas. The bylaw power can allow you to control certain things, could lead to greater use of the site overall though.

Q5. Would LNR Status require WTC do manage the site in a certain way, add any additional burden to WTC or require any specific bylaws.

A5. LNR does not dictate any changes to management plans, changes to dogs, no addition burden apart from the process of getting the declaration, no mandatory management requirements other than H&S and other stuff, no mandatory extra burden on the landowners.

Q6. Are we mandated to remove Sycamore trees?

A6. We don't have to get rid of them if we don't want to, but can if we choose to, LNR does not say we have to get rid of anything it's up to the management plan.

Q7. Can the status be removed?

A7. Yes it can be removed by the council.

Q8. If sold does the LNR cease to exist as it no longer is owned by the local authority and so does not have the requirements to stay an LNR.

A8. We are awaiting an answer.

Q9. Does LNR protect against compulsory purchase, other than planning side of things.

A9. KWT are looking into it.

Q11. Would the fact that that Hawkshill is one of a very small areas of chalk grassland left would the BNG requirements stop the sale dead in the water. As it is unlikely that anyone could find more grass chalkland to allow for the BNG, they may have buy credits instead.

A11. The development of Hawkshill would have very little scope for any on-site BNG, so it is likely that it would cost a lot of money to buy enough credits. Currently the DEFRA calculations are used.

Q12. Are there any ways to apply covenants or promissory things that is more effective to prevent it being used for development?

A12. No there are none.

Q13. Would a chalk downland with LWS protection or one with LNR protection, cause the amount of credits attached to differ.

A13. At the moment the metric is about the habitats on the locations, the amount of them and the condition they are in. There is no extra score due to status, only about habitats, Hawkshill should score highly with a suitably high price tag.

Q14. Is there anything about Hawkshill about its ecological value that we are not able to protect as a LWS that we would need to have it as an LNR?

A15. No, both are able to protect the assets on site at the levels assigned to them.

Through the process of reviewing the status of Hawkshill members have been clear that there is a desire to keep Hawkshill Common as an area for nature and publicly accessible. There have been no suggestions that Walmer Town Council should sell the land and the review has only looked at protection for the future.

Options

- *To ask officers to start the process of declaring a Local Nature reserve while keeping the Local Wildlife Site designation.*
- *To leave the site with the current designation of Local Wildlife Site only.*
- *To send the item to full council to make the decision.*

Members to decide